

## SPECIFIC ENTRY REQUIREMENTS

- You must normally hold a UK honours degree or equivalent overseas degree from a recognised institution.
- If you do not hold an honours degree or equivalent, you will be required to submit work which will be taken into account as part of your application.
- If you have not previously studied Biology above A-level, (or equivalent), you will be asked to complete an online study package in Cancer Biology before you take the Applied Cancer Biology module.

You may be eligible for transferred certificated credit, if you can produce transcripts of equivalent study in one or more modular areas. If you wish to transfer credit you will be required to produce transcripts, so are advised to make initial enquiries through the Programme Administrator.

Note: the university offers a pre-master's programme which has been designed to fully prepare you for your future master's course if:

- your undergraduate qualifications do not meet the level required for postgraduate study
- you wish to take a master's in a subject that is different from your undergraduate degree
- you need to improve your study skills and use of academic English.

## COURSE FEES

The fees for the course are calculated on the number and type of modules taken. Please visit our website or contact the Programme Administrator for details.

## HOW TO APPLY

You can apply for this course through UCAS

Postgraduate:

**<https://www.ucas.com/ucas/postgraduate/apply-and-track>**

UCAS Postgraduate code: P041894

## FURTHER INFORMATION

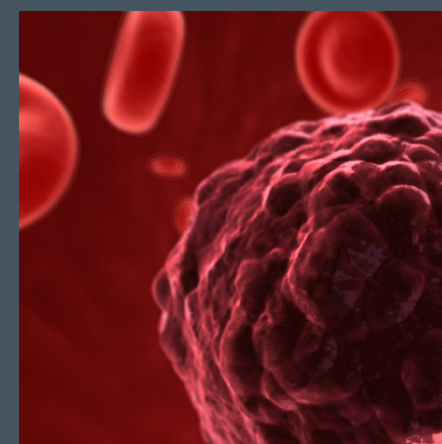
If you would like to talk to a member of the teaching team about the course, please contact the Programme Administrator who will direct your enquiry to a member of the team.

Programme Administrator  
[cancerstudies@brookes.ac.uk](mailto:cancerstudies@brookes.ac.uk)  
+44 (0) 1865 488157  
**[postgraduate/courses/cancerstudies/](#)**

# CANCER STUDIES

## MSc / PGDip / PGCert

Department of Applied Health and Professional Development



All information is correct at the time of going to press. Please refer to the University's website for the most up-to-date details.

Oxford Brookes University actively supports equality in education and welcomes applications from all people representative of our diverse community. For more details please visit [www.brookes.ac.uk/services/hr/eod](http://www.brookes.ac.uk/services/hr/eod) or phone +44 (0) 1865 485929.



## COURSE OVERVIEW

Most people's lives are touched by cancer at some point. Cancer is a major cause of morbidity and mortality, although with increased screening, early detection and continually improving treatments, there are now over two million survivors of cancer in the UK. The impact of cancer does not stop when treatment is over, and cancer can have wide-ranging consequences for physical, psycho-social and practical aspects of life for many years. In addition, cancer is a major focus of medical research, treatment development and clinical trials – all of which raise interesting ethical, legal and policy issues, both in the UK and internationally.

This course offers an innovative interdisciplinary perspective on the study of cancer. Three core modules, which encompass both biological and social sciences, provide the foundation. These equip you to apply key theories and concepts critically, and to develop the skills required to engage in debates about the impact of cancer on the individual, the family and society. A wide range of additional modules offer the opportunity to examine aspects of cancer in greater detail from different perspectives, ranging from professional practice to historical perspectives, from epidemiological and medical research to biotechnology.

The course also provides the opportunity to undertake advanced study in Oxford, a city renowned for its academic excellence, with a Cancer Centre and a range of expert practitioners working in the cancer field. The department hosts the prestigious HRH Prince Sultan Chair in Cancer Care and the Cancer Care research group. You may exit the course at different points, with PGCert, PGDip or MSc in Cancer Studies.

## START DATES

You can either begin the course in:

- Semester 1 (September – December)
- Semester 2 (January – May)

Module choices will be restricted by the timetable conditions.



Students on this course will gain important insights into the nature of cancer research and its broader implications. As the influence of science on society continues to grow, such insights are as important to scientists as they are to the wider public.

**Sir Paul Nurse**  
Nobel Laureate and former Chief  
Executive of Cancer Research UK

## COURSE CONTENT

This exciting master's course is open to UK, EU and international applicants. The course will appeal to a wide range of individuals who wish to gain an understanding of cancer and its impact from a range of different perspectives. This includes:

- social science and humanities graduates
- science graduates who do not wish to pursue a laboratory-based career
- doctors
- nurses
- allied health professionals
- science and medical journalists
- people working for medical charities and in the pharmaceutical industry
- individuals who have been affected by cancer (either themselves or a family member).

The unique features of this course include:

- interdisciplinary, cross-university teaching in epidemiology, public health, applied biology, history, ethics and law
- a range of optional modules to support and complement individual interests and needs
- links with the local hospital and community Trusts, and the Oxford Cancer Centre.

This multidisciplinary course aims to equip you with an understanding of the impact of cancer on the individual, family and society, and to apply key theories and concepts to these topics.



## MODULES

Below are examples of modules you will study. You will also have the opportunity to select an additional two optional modules to suit the individual focus of your studies. For more information please visit [www.brookes.ac.uk/postgraduate/courses/cancerstudies](http://www.brookes.ac.uk/postgraduate/courses/cancerstudies)

### LIVING WITH CANCER IN CONTEMPORARY SOCIETY

Provides an insight into how the preoccupations of late modern society shape perceptions and experience of cancer at the social, cultural and individual level. Key themes include heightened perceptions of cancer risk and increasing surveillance, self monitoring and self regulation; cancer as a challenge to personal identity; cancer narratives and biographical reconstruction; the cancer journey and survivorship; the good death and the meaning of mortality; and media representations of cancer. You will have the opportunity to interview a cancer survivor, carer or health professional and to engage in debates about contemporary issues in the experience of cancer.

### TACKLING CANCER: UK AND INTERNATIONAL PERSPECTIVES

Explores the ways in which societies and social institutions have attempted to understand, manage and control cancer. Topics include defining and describing cancer and its distribution in populations; risks, causes and prevention of cancer (individual and environmental approaches); cancer treatments and the organisation of treatment services; ethical and legal issues in cancer care and research; diagnosis and cancer policies. An international and comparative approach will be taken throughout with case studies drawn from different historical periods and cultural traditions. You will have the opportunity to make a field visit relating to cancer treatment and prevention.

**Oxford Brookes University has a community of more than 19,000 students, including more than 5,000 postgraduates.**

Approximately 20% are international students who come from more than 145 countries worldwide, in addition to other European Union countries. We value the academic and cultural contribution international students bring to the University.

### APPLIED CANCER BIOLOGY

Offers you and your fellow students, who may come from diverse backgrounds, the opportunity to develop an in-depth understanding of the biology of cancer. It explores the molecular mechanisms of cancer biology, how those mechanisms are manifested as disease, and current applications of cancer biology research.

The aim of the module is to enable you to engage in activities where a sound knowledge of cancer biology is required. You will have an opportunity to see how cancer research is conducted in a laboratory. As the course is interdisciplinary, you will have considerable scope for defining your dissertation topic and choosing an appropriate research methods module from the fields of biology, health care, history, sociology, business, education, and law.

### RESEARCH METHODS (NOT LABORATORY-BASED)

Is intended to equip you with skills to find, appraise and utilise research, as well as to plan and design a small-scale research study. It will prepare you to define a suitable research question and to use this as a basis for identifying appropriate research methodologies and methods for your dissertation.

